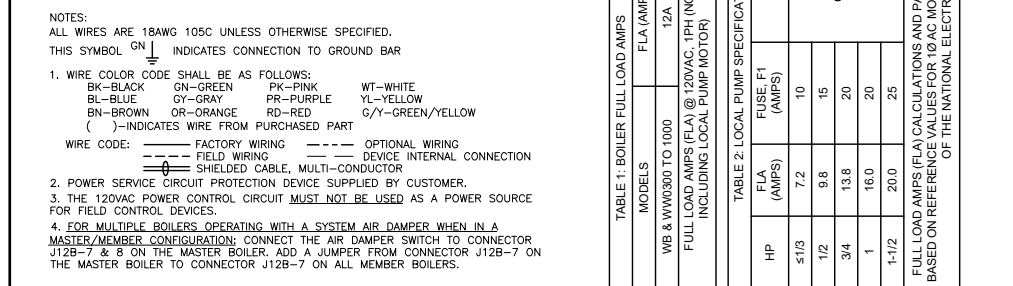
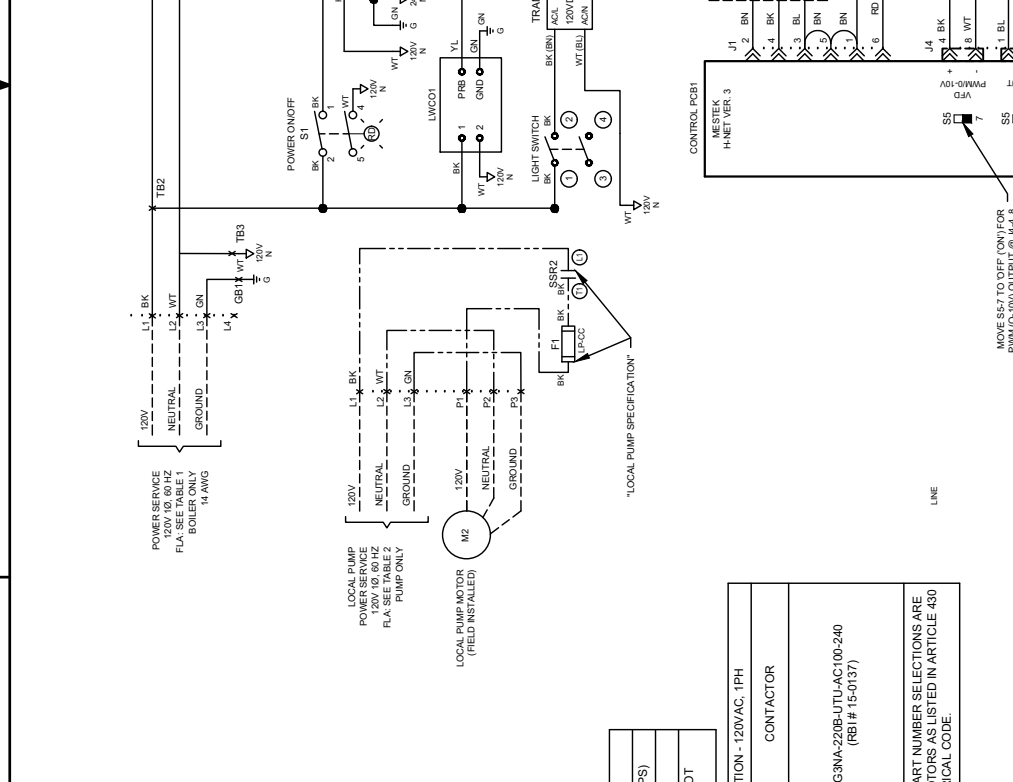
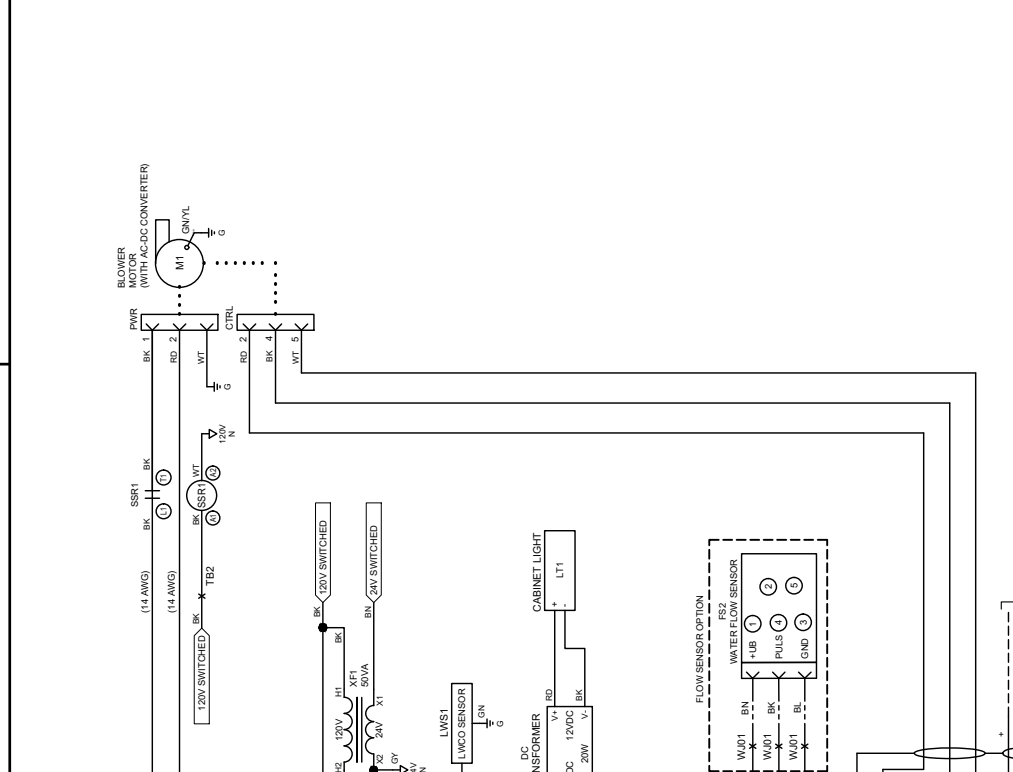
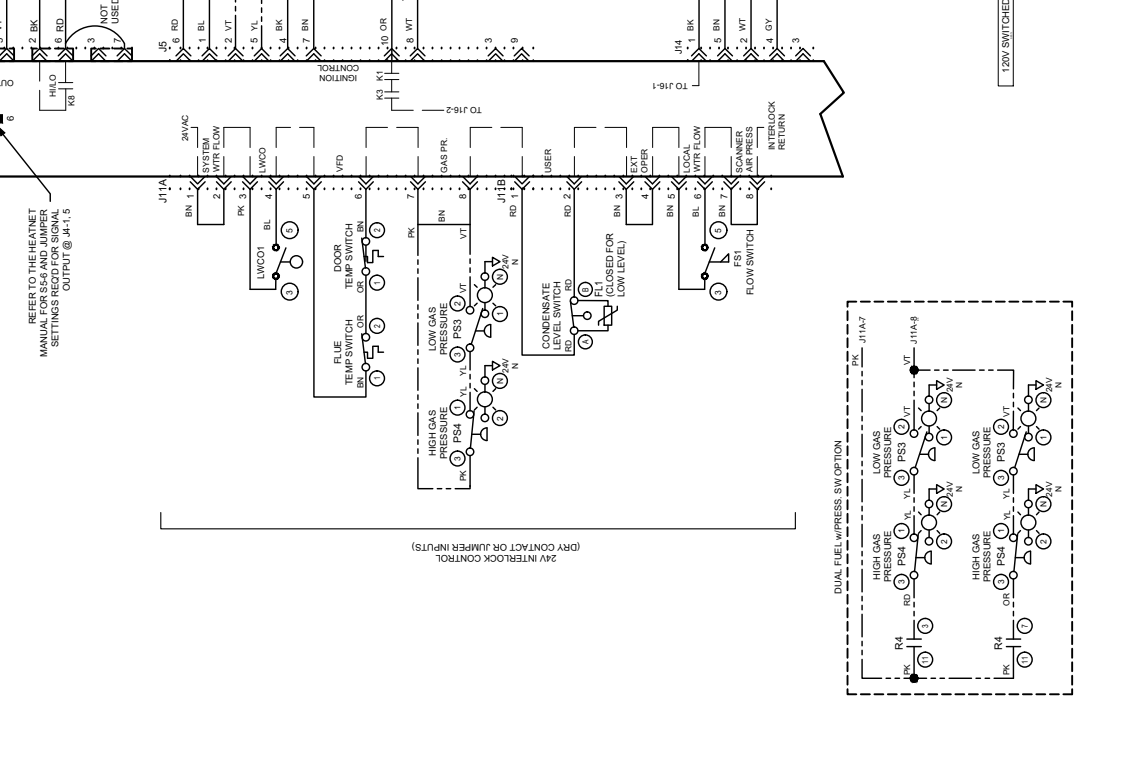
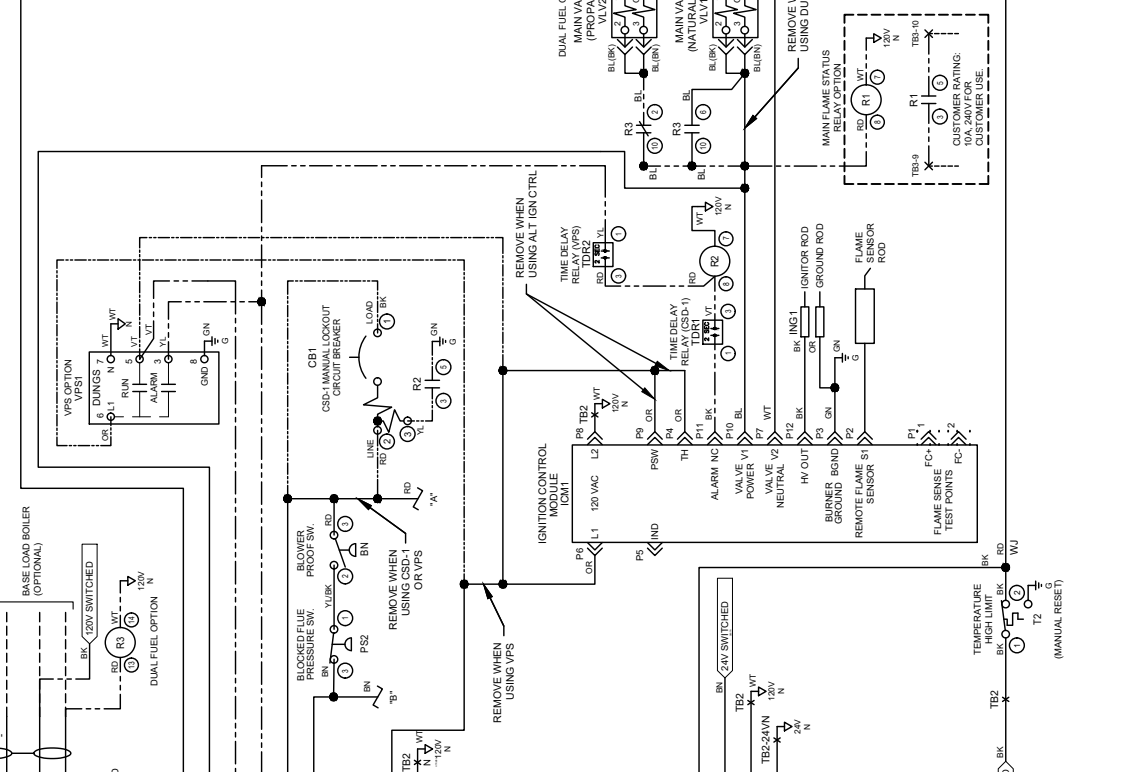
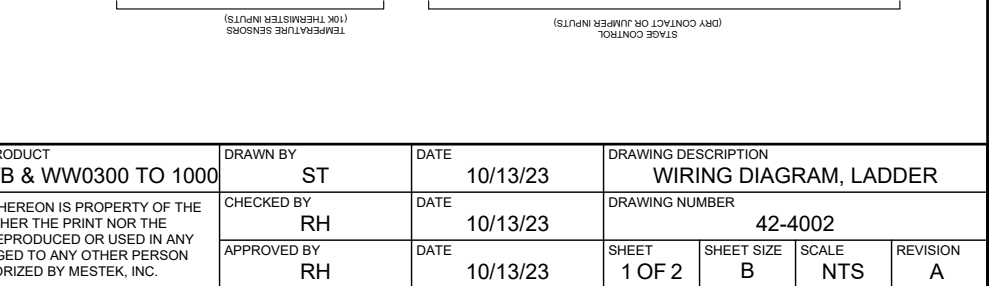
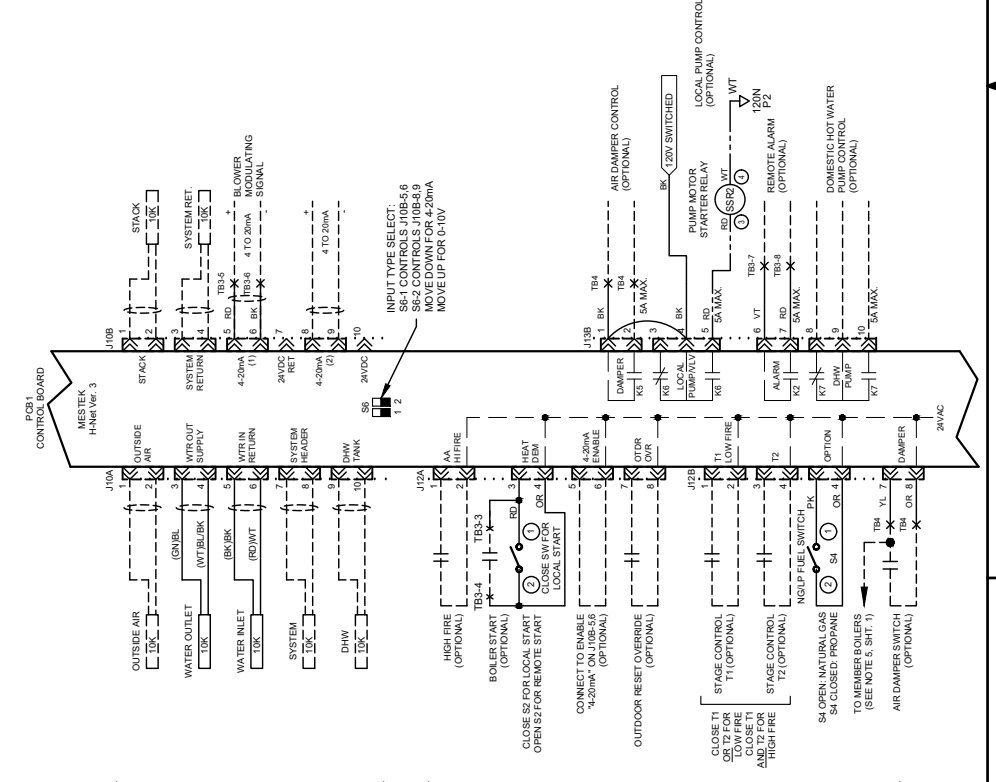
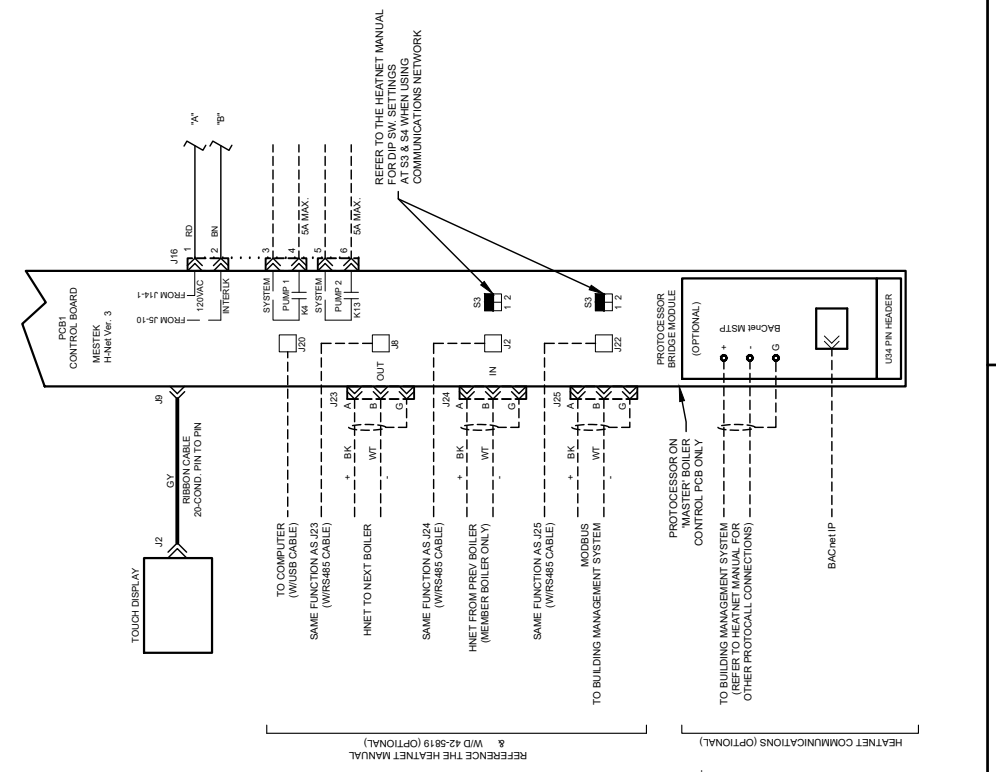


REVISIONS				
REV.	EN NO.	DATE	DRAWN BY	APPROVED
A	N/A	10/13/23	ST	RH

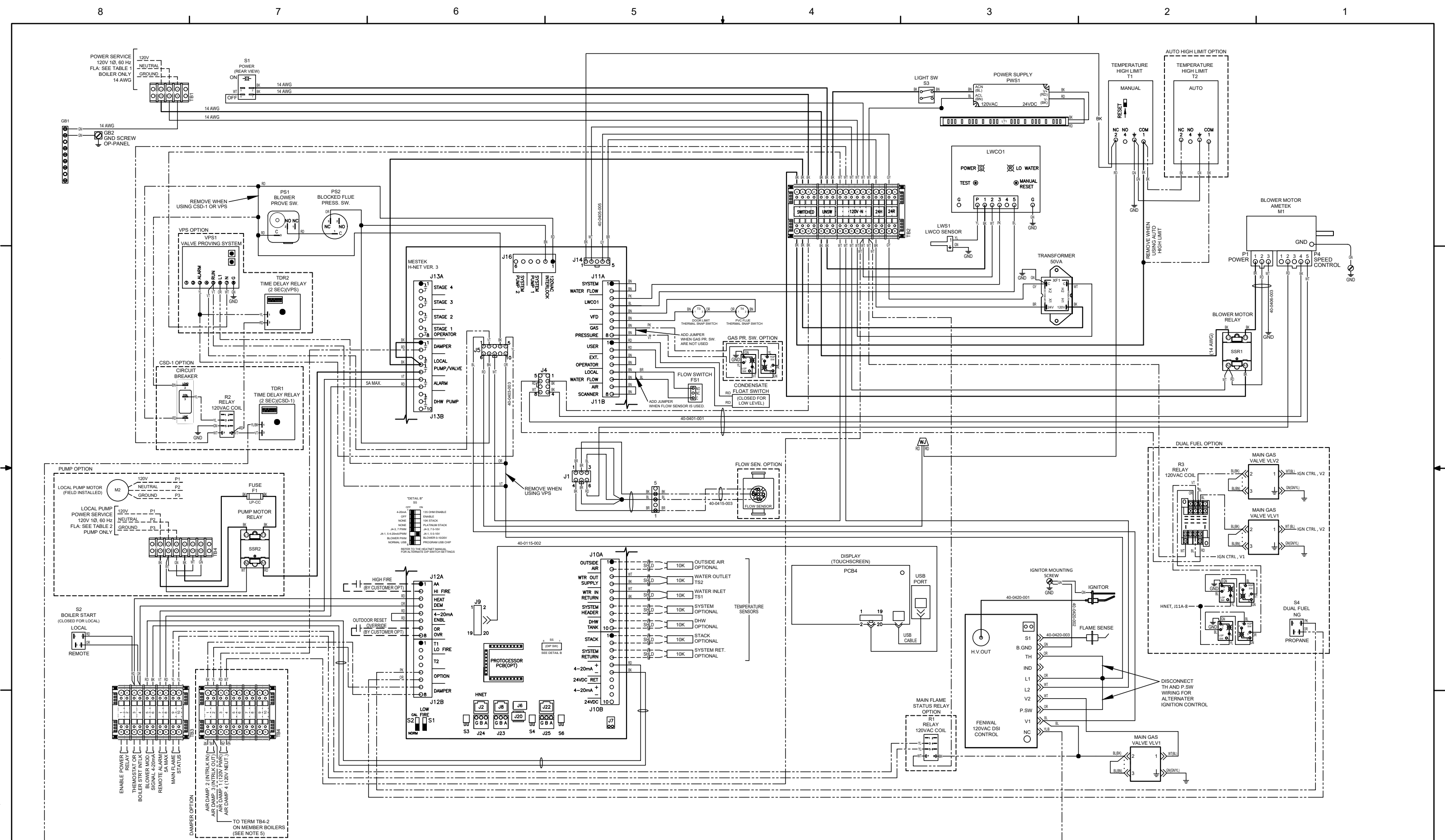


NOTES:
 ALL WIRES ARE 18AWG 105C UNLESS OTHERWISE SPECIFIED.
 THIS SYMBOL INDICATES CONNECTION TO GROUND BAR
 1. WIRE COLOR CODE SHALL BE AS FOLLOWS:
 BK-BLACK GN-GREEN PK-PINK WT-WHITE
 BL-BLUE GY-GRAY PR-PURPLE YL-YELLOW
 BN-BROWN OR-ORANGE RD-RED G/Y-YELLOW/YELLOW
 () -INDICATES WIRE FROM PURCHASED PART
 WIRE CODE: --- FACTORY WIRING --- OPTIONAL WIRING
 --- FIELD WIRING --- DEVICE INTERNAL CONNECTION
 --- SHIELDED CABLE, MULTI-CONDUCTOR ---
 2. POWER SERVICE CIRCUIT PROTECTION DEVICE SUPPLIED BY CUSTOMER.
 3. THE 120VAC POWER CONTROL CIRCUIT MUST NOT BE USED AS A POWER SOURCE FOR FIELD CONTROL DEVICES.
 4. FOR MULTI-FUEL BOILERS OPERATING WITH A SYSTEM AIR DAMPER WHEN IN A MASTER/MEMBER CONFIGURATION: CONNECT THE AIR DAMPER SWITCH TO CONNECTOR J12B-7 & 8 ON THE MASTER BOILER, ADD A JUMPER FROM CONNECTOR J12B-7 ON THE MASTER BOILER TO CONNECTOR J12B-7 ON ALL MEMBER BOILERS.

MODELS	FLA (AMPS)
WB & WW0300 TO 1000	12A

HP	FLA (AMPS)	FUSE F1 (AMPS)	CONTRACTOR
5/1/3	7.2	10	
1/2	9.8	15	
3/4	13.8	20	
1	16.0	20	
1-1/2	20.0	25	

FULL LOAD AMPS (FLA) CALCULATIONS AND PART NUMBER SELECTIONS ARE BASED ON REFERENCE VALUES FOR 10AC MOTORS AS LISTED IN ARTICLE 430 OF THE NATIONAL ELECTRICAL CODE.



DIVISION		DRAWING DESCRIPTION			
RBI		WIRING DIAGRAM, LAYOUT			
PRODUCT		DRAWING NUMBER			
WB & WW0300 TO 1000		42-4002			
SHEET	SHEET SIZE	SCALE	REVISION		
2 OF 2	B	NTS	A		